

# **Grouse Mountain Flying Team**

## **Information, Rules & Procedures for all Pilots**

Version: April 25 2023

Paragliding on Grouse Mountain is a privilege reserved for members of the Grouse Mountain Flying Team (GMFT) and for guests of the GMFT. To preserve this privilege, GMFT members and guests at all times will obey directions and notices issued by Grouse Mountain staff. All pilots will be courteous to Grouse Mountain visitors. All pilots will fly safely, will obey airspace regulations, will not obstruct helicopter operations on or near the mountain, and will not interfere with Grouse mountain/resort activities, events and equipment.

### **The GMFT is Responsible for:**

- ✓ liaising with Grouse Mountain on all matters related to paragliding,
- ✓ liaising with the District of North Vancouver on all matters related to the landing fields,
- ✓ certifying that all pilots meet and maintain the requirements for member status or guest status, and
- ✓ ensuring that all pilots are aware of and comply with all rules and procedures for flying Grouse Mountain.

### **Requirements for GMFT Members:**

- ✓ HPAC Advanced Rating (P4) or Foreign Equivalent
- ✓ HAGAR certification
- ✓ Valid HPAC insurance
- ✓ A documented minimum of 250 flights and 60 hours of thermic airtime
- ✓ A minimum of one season-equivalent of incident-free Grouse Mountain flying
- ✓ A paraglider appropriate to the pilot's skill level and capable of greater than 6:1 glide ratio
- ✓ A reserve parachute

### **Requirements for GMFT Guest Members:**

- ✓ Individuals who are close to meeting the requirements for GMFT pilots may apply to become GMFT guest pilots, thereby providing them an opportunity for gaining site relevant experience.
- ✓ Guest pilot status is a privilege conferred by the GMFT membership committee.

- ✓ Guest pilots must carry valid HPAC insurance.
- ✓ Guest pilots must have at least an HPAC Intermediate Rating (P3) or its foreign equivalent.
- ✓ Guests are permitted to fly only if their name is included in the current list of guest pilots.
- ✓ Guests must be accompanied by a GMFT member on every flight.
- ✓ The GMFT member supervising a guest must launch after the guest.
- ✓ A GMFT member is permitted to supervise a maximum of 3 guests on any flight.
- ✓ While on the mountain, each guest is the responsibility of the accompanying team member.

## **Flying Operations for GMFT Members & Guests:**

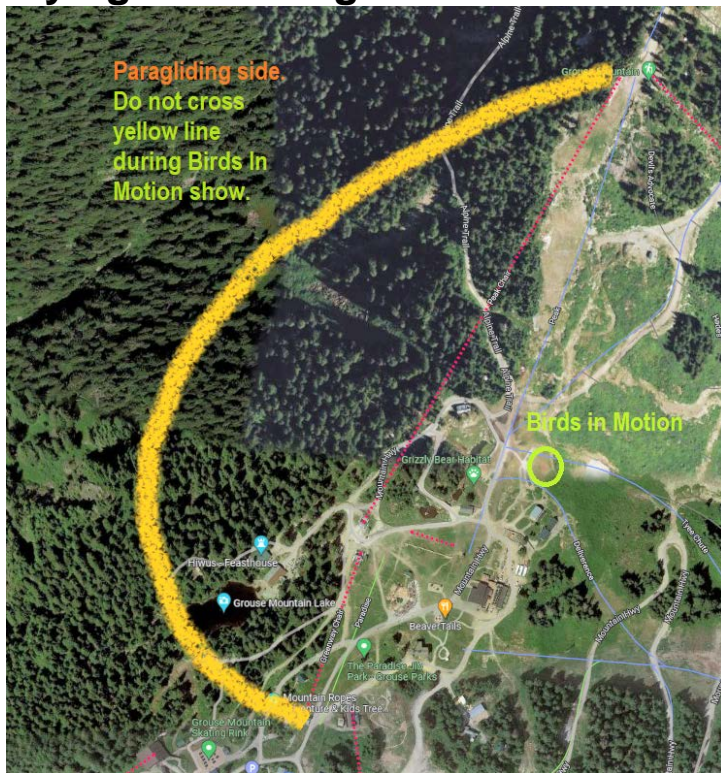
- ✓ Permission to fly Grouse Mountain is not automatic and is granted for one season at a time.
- ✓ GMFT members are placed on the approved pilots list for a flying season if
  - their HPAC insurance is current,
  - they have paid the annual GMFT membership fee, and
  - they have attended the start-of-season meeting of pilots which preferentially is held on top of Grouse, in a space reserved for us by Grouse.
- ✓ A pilot – GMFT member or guest -- who was unable to attend the start-of-season pilots briefing must attend an online (on Zoom, MS Teams, etc.) briefing meeting that includes all aspects covered at the start-of-season briefing. The online briefings are hosted by a GMFT board member: BN, PG or TW.
- ✓ New pilots are placed on the guest pilots list for a flying season after a review of their credentials and their flying skills by the GMFT membership committee.
- ✓ Every member and every guest must sign the Grouse Mountain waiver prior to their first flight of each season.
- ✓ Prior to their first flight each day, every pilot must sign the GMFT logbook.
- ✓ Waivers and the GMFT logbook are at Grouse Mountain Guest Services.
- ✓ The GMFT member who supervises a guest must accompany him/her to Grouse Mountain Guest Services.
- ✓ Prior to a guest's first flight on Grouse Mountain, and at least once every year thereafter for pilots who remain on the guest list, the guest must receive a thorough site briefing, which consists of the start-of-season pilots briefing or the follow-up online version plus a landing field briefing.
  - The landing field briefing must be held at the landing field. Guests who show up at launch are not permitted to fly, until they have received a landing field briefing.
  - The landing field briefing must be provided by a GMFT member who attended either the start-of-season pilots briefing or the follow-up online briefing.

- The landing field briefing must cover all site rules and flying protocols; it must emphasize those aspects which were featured at the start-of-season pilots briefing, as well as the risks and prohibitions unique to flying Grouse Mountain, including:
  - The air space restrictions around Grouse Mountain
  - The prohibition against flying over Capilano Lake;
  - The prohibition against acrobatic or radical flying maneuvers;
  - The distraction due to curious bystanders, and we pay the attention because they are Grouse guests like we.

Note: Flying at Grouse remains “free”, but the landing field costs payable to the district of North Vancouver are increasing, and are covered by the annual fees charged to members and guests. Donations for site maintenance are always greatly appreciated.

Note: A GMFT member may collect a guest pilot’s rating card and return it to the guest at the end of the flying day provided that no site regulations have been broken. If a guest pilot breaks site regulations that were covered in the site briefing, this infraction may be reported to the rating card issuing body along with the pilot’s rating card. Site infractions may result in suspension of Grouse flying.

## Flying/Launching Restrictions:



The Birds-In-Motion show is one of Grouse’s major mountaintop attractions. The show features the incredible hunting skills of the eagle and hawk, as well as the flying skills of the Peregrine Falcon.

In past years, Grouse has lost at least 2 of their expensive and highly-trained birds, possibly because they were spooked by paragliders in the area.

To prevent further losses, do not launch 5 minutes prior to, and while one of the 30-minute Birds-In-Motion show is ongoing.

The Birds-In-Motion shows are scheduled daily starting at 12:45, 3:15 and 5:30, from June through August.


Please install the Grouse Mountain App on your phone for up-to-date information on the Birds-in-Motion show times and other events on the Peak of Vancouver.

If you are flying when a Birds-in-Motion show is in progress, stay to the far west of the Birds-in-Motion show and do not cross over the yellow boundary line shown in the

picture. This BIM-show flying-exclusion area extends from the ground up to the top of our CYA (airspace advisory area)

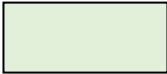


## Grouse Mountain Airspace:

 The Grouse Mountain flying site is protected by a CYA which extends up to 5000' ASL. Class C airspace starts at 6500' ASL. South of Highway 1, the airspace is Class C from the ground up. Paragliders are not permitted to fly in Class C airspace at any time.

At all times, keep your eyes peeled while flying Grouse Mountain because there is a lot of VFR traffic in the Capilano Valley. Also keep on the look-out for SAR helicopters, and stay clear of the SAR helicopter landing platform next to Cleveland dam -- marked by the red circle in the picture, by restricting your landing approach to the east side of Nancy Green Way.

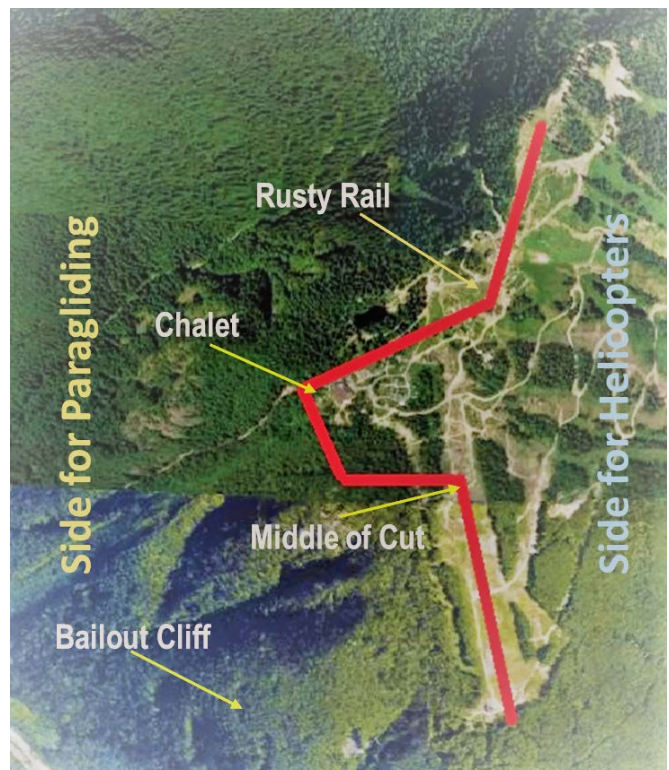
## Sharing Airspace with Helicopters:

 We share the top of Grouse Mountain with helicopters (e.g. sightseeing trips to the Lions). Helicopter traffic can be extremely busy during the flying season.

The map shows how the airspace is allocated for paragliding flying & helicopter operations. The red line is the separation between the two airspaces. *Please always stay out of the air-space allocated for helicopter operations.*

While flying Grouse Mountain, at all times:

- ✓ Keep looking-out for helicopters who share the air with us,
- ✓ Fly to the west of the paraglider-helicopter separation line (marked in red on the map),



- ✓ When flying low near the helicopter take-off and landing area, give them extra clearance and extra room to maneuver freely and safely.

## Trams & Tram-Cable Clearances:



The Red and Blue trams are vital and busy arteries for Grouse Mountain Resort, for transporting visitors and goods up to/down from the mountain.

For these reasons, pilots take special caution not to interfere with the trams or the tram cables.

- Pilots are required to fly at a vertical distance of 100 meters over the trams or tram cables.
- Pilots are required to keep a distance of 50 meters to each side of the trams or tram cables.



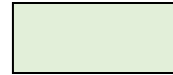
In the picture, the parallel red lines show the cables for the Red and Blue tram, respectively. These cables are ~50 meters apart from each other. The yellow line in the pictures represents a 50 meter difference from the Red tram line. Please note the landmarks corresponding to the yellow line, and at all times, do not cross the yellow line unless you are 100 meters above the tram or tram cables.

## Paraglider Flight Plan:

- The flight path is from the Peak of Grouse Mountain, down the valley to the right of launch, around the rock bluff, out to the middle tram-line tower and then over the tram line, east towards the bottom of the cut, then out to the landing field.
- Guest pilots are expected to fly especially conservatively in order to maintain glide to the landing field, with generous clearance over the tram line, and with constant attention to site boundaries and altitude restrictions.
- Always leave the mountain before dropping below the bailout cliff (note: At your side briefings, please highlighted the location of this cliff while you are at the landing field). If you are below the bailout cliff, you may not reach the landing zone, especially with strong wind from the south or southwest.
- Cleveland Park is our only landing zone (LZ).
- Landing is permitted only during the times designated in our field permit.

## Site Dangers:

In addition to all the dangers inherent in the sport of Paragliding, Grouse Mountain has some additional unique site dangers, including but not limited to these:



- Strong east winds that may create a potentially dangerous rotor zone over the cliffs west of the gondola station. Avoid launching in strong east winds, and if in the air, take a wide flight path over the valley in order to avoid rotors on the west side of the mountain. In strong east wind, you may experience strong sink on the west side of the mountain.
- Strong anabatic flow (inflow winds) into the Capilano watershed is frequent (it will feel like an east wind). For this reason, is very important to follow the prescribed flight path along the face of the mountain, toward the bottom of Cut, prior to heading out to the LZ.
- Stay clear of the next ridge to the West of the gondola station. In strong east wind, your return from this ridge will be difficult or impossible.
- The Cleveland Park LZ is surrounded by high trees and fences, and the field may be used by people engaged in various sporting activities. For this reason, visit the landing field before heading up the mountain, and plan your landing approach carefully, and carry a whistle for alerting players about your landing.
- The Cleveland Park LZ is highly thermic in the middle of the afternoon. Avoid landing during the most thermic part of the day.

## Incident Reporting:

Any incident or accident is to be reported immediately, first to Grouse Mountain Resorts Ltd. (Tel: 604-998-4321) and then to a GMFT Director (Bill Nikolai, Tal Wolf or Peter Graf).

In the case of a serious incident/accident, if someone might need medical attention, immediately call 911 for emergency services.

## Public Relations:

We are guests on Grouse Mountain and our actions reflect not only upon ourselves, but also on Grouse Mountain and on the flying community in general. At all times, be polite, patient and courteous when dealing with the public and Grouse Mountain staff.

Note: Grouse Mountain is a smoke free resort. Smoking is not permitted anywhere on the mountain.

**Important Note: You paraglide from Grouse Mountain entirely at your own risk**



BIRDS in MOTION SHOWS start at 12.45 pm, 3.15 pm & 5.30 pm (Always check the Grouse Mountain App).

Do not launch 5 minutes prior to each show or during a show.

If you are in the air, do not cross into the BIM-show are exclusion zone.

## Landing Field Use Permit

For information on our use of the landing fields, please check this google calendar:

<https://calendar.google.com/calendar/u/0/r>

**I have read all parts of this document and understand the information, rules and procedures pertaining to paragliding on Grouse Mountain Resort.**

**Date:** \_\_\_\_\_

**Name:** \_\_\_\_\_

**Signature:** \_\_\_\_\_